

# TARGETER WINGS STANDARD SEVEN - YEAR 2021

## CONTINUOUS ASSESSMENT TEST



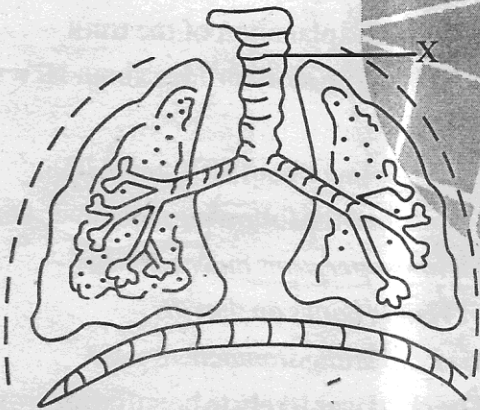
# SCIENCE



TIME: 1 hr 40 mins

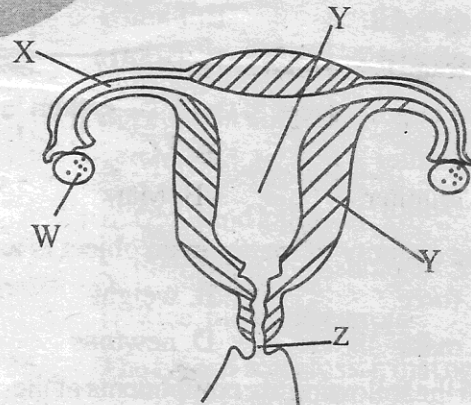
1. A human being has a pair of sharp pointed teeth on each jaw. These teeth are called  
A. premolars                      B. incisors  
C. canines                          D. molars
2. Which one of the following statement is not true about caring for our teeth?  
A. Brush teeth regularly.  
B. Eat whole grains.  
C. Use toothpick to remove food between the teeth.  
D. Use warm salty water.

**The diagram below shows the C-Shaped rings on the trachea labelled X.**



3. The main function of the C-shaped rings is to  
A. enable the exchange of gases.  
B. keep it open always.  
C. allow easy movement of gases in and out of the lungs.  
D. hold the trachea in place.
4. Which one of the following is the third step when modelling the solar system?  
A. Model the planets.  
B. Paste manilla paper on a soft board.  
C. Paste the planets and the sun on the orbits.  
D. Draw the orbits.

5. Which one of the following materials is not a translucent material?  
A. Dirty water.                      B. Frosted glass.  
C. Oiled paper.                      D. Car windscreen.
6. The vaccine that is given to a baby at birth is the  
A. Measles vaccine.                      B. DPT vaccine.  
C. Polio vaccine.                      D. Yellow fever vaccine.
7. Which one of the following plants does not have a tap root system?  
A. Grass                                  B. Maize  
C. Onions                                  D. Kales
8. All the following plants can make their own food except  
A. algae                                      B. mushrooms  
C. cactus                                      D. grass
9. The diagram below shows the female reproductive system.



Which part produces the female sex cells?

- A. Z    B. W  
C. X    D. Y
10. Which one of the following is not a physical change in girls during adolescence?  
A. Increase in body size.  
B. Breast enlargement.  
C. Hair grows in the armpit.  
D. Wet dreams start.

11. One of the following is **not** an example of cash crop. Which one is it?

- A. Coffee                      B. Sisal  
C. Sunflower                  D. Wheat

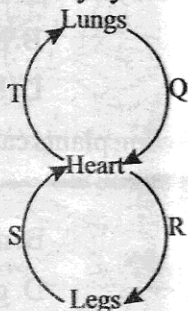
12. The following are characteristics of a certain weed.

- i) *Thorny stem.*  
ii) *Purple flowers.*  
iii) *Yellow or green fruits.*

The weed is **likely** to be:

- A. Thorn apple  
B. Black jack  
C. Sodom apple  
D. Mexican marigold

13. The diagram below shows a simplified human circulatory system.



Which two blood vessels carry bright red blood?

- A. Q and R                      B. T and S  
C. S and R                      D. T and Q

14. The largest planet in the solar system is

- A. Jupiter                      B. Mars  
C. Saturn                      D. Earth

15. The quantity of matter in an object is its

- A. force                      B. weight  
C. mass                      D. newtons

16. All the following are components of the blood circulatory system **except**

- A. blood vessels              B. blood  
C. lungs                      D. heart

17. All the following are social effects of abusing drugs **except** one. Which one?

- A. Induced accidents.  
B. Truancy.  
C. Rape.  
D. Lack of concentration.

18. The addictive substance found in tobacco is called

- A. Nicotine                      B. Tar  
C. Carbon dioxide            D. Carbon monoxide

19. Which one of the following is the **best** method of controlling weeds in a garden?

- A. Slashing                      B. Uprooting  
C. Mulching                      D. Digging them out

20. The presence of thick white and mountain shaped clouds is a sign of

- A. heavy rains                      B. low temperatures  
C. fine weather                      D. strong winds

21. Which factor does **not** affect floating and sinking?

- A. Mass                      B. Material  
C. Size                      D. Shape

22. Which one of the following statements explains the meaning of misconception about HIV and AIDS?

- A. It is a wrong story that creates fear.  
B. It is a story invented and told but is a wrong explanation of the truth.  
C. It is a true story or idea about HIV and AIDS  
D. It is a fact about HIV and AIDS.

23. A child had the following signs and symptoms

- i) *Thin upper arms and neck.*  
ii) *Visible bones on the ribs.*  
iii) *Protruding stomach.*

The child was **likely** to be suffering from

- A. kwashiorkor                      B. marasmus  
C. rickets                      D. anaemia

24. If a card with the word **MIRROR** is placed in front of a mirror, the image formed will be

- A. **MIRROR**                      B. **MIRЯЯ**  
C. **MIBKOB**                      D. **ЯOЯЯIM**

25. Digestion of foods in the alimentary canal ends in the

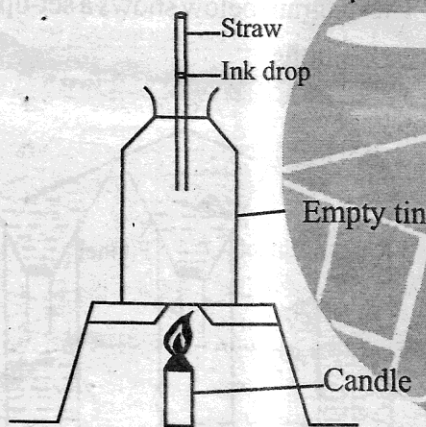
- A. anus                      B. large intestines  
C. small intestines              D. stomach

26. The following are signs of bilharzia **except**
- A. skin rash.
  - B. swimmers itch.
  - C. blood in urine and faeces.
  - D. pain the muscles and joints.

27. The following are ways of maintaining tools **except**
- A. cleaning after use.
  - B. greasing or oiling.
  - C. using them always.
  - D. sharpening cutting tools.

28. The component of soil that improves its water holding capacity is
- A. mineral particles
  - B. air
  - C. humus
  - D. living organisms

29. Std. five pupils carried out the experiment below.

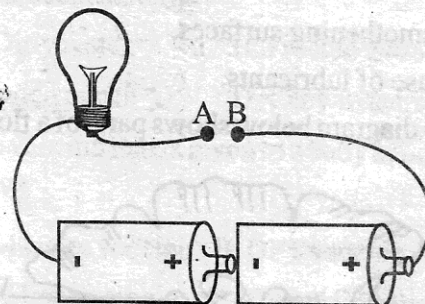


After the experiment, the pupils concluded that

- A. liquid expands when heated.
  - B. ink drop moves upwards when heated.
  - C. gases expand when heated.
  - D. air contracts when heated.
30. Which one of the following crop pests attacks seedlings?
- A. Aphid
  - B. Cutworm
  - C. Stalkborer
  - D. Weevil
31. Which among the following foods can be preserved by salting?
- A. Meat
  - B. Kales
  - C. Oranges
  - D. Maize

32. Which statement below is **true** about a straight fertilizer? It contains
- A. micro and macro nutrients.
  - B. two or more macro nutrients.
  - C. only one macro nutrient.
  - D. only one micro nutrient.

33. Std. 7 pupils carried out the experiment below.



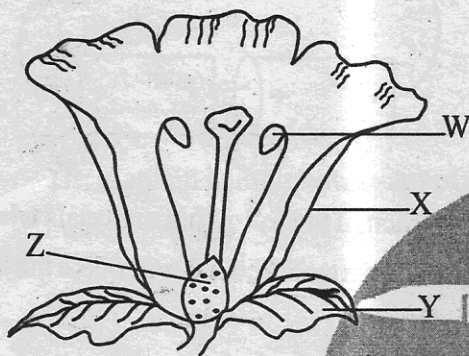
Which of the following materials when placed at the part marked **AB** will make the bulb light?

- A. Dry stick and thread.
  - B. Rubber and nail.
  - C. Silver and wood.
  - D. Nail and pencil.
34. The loudness or softness of sound is called
- A. rhythm
  - B. pitch
  - C. volume
  - D. amplification
35. Which of the following sets of foods does **not** contain vitamins?
- A. Maize and beans.
  - B. Ugali and kales.
  - C. Fish, ugali and cabbage.
  - D. Rice, meat and carrots.
36. The type of soil erosion that occurs on steep slopes and forms deep u-shaped channels is called
- A. gully
  - B. splash
  - C. sheet
  - D. rill
37. Which one of the following materials is **not** magnetic?
- A. Office pins
  - B. Nail
  - C. Sellotape
  - D. Razor

38. Which pair of liquids below when put together and mixed will form a miscible mixture?  
 A. Water and petrol. B. Milk and kerosene.  
 C. Petrol and ink. D. Water and milk.

39. The following are all ways of reducing friction **except**  
 A. use of rollers.  
 B. use of treads  
 C. smoothening surfaces.  
 D. use of lubricants.

40. The diagram below shows parts of a flower.



Which part protects the flower during its bud stage?

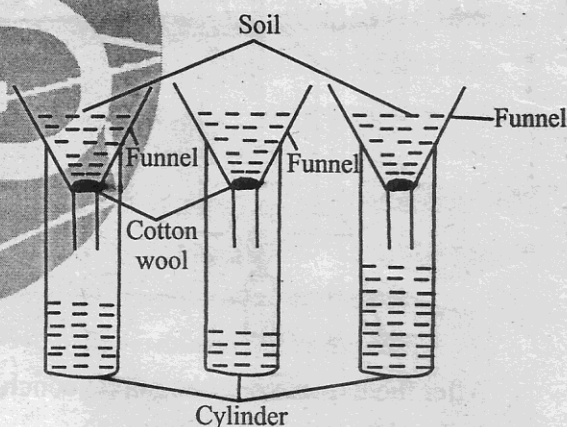
- A. W B. X  
 C. Y D. Z
41. In a food chain which one of the following is called a producer?  
 A. Green plants B. Animals  
 C. Sunlight D. Bacterias
42. Plants depend on each other for the following ways **except**  
 A. support B. shade  
 C. habitat D. food
43. Which one of the following process does **not** require oxygen?  
 A. Germination B. Preserving foods  
 C. Burning D. Breathing
44. The component of blood that transports foods and wastes in the body is  
 A. red cells B. white cells  
 C. plasma D. platelet
45. When the arrow of a windvane points to the East, the wind must be blowing from  
 A. West B. East  
 C. North D. South

46. Which of the following is a way of conserving water by using it sparingly?  
 A. Harvesting rain water.  
 B. Mulching.  
 C. Storing water in dams.  
 D. Using drip irrigation.

47. Which one of the following is **not** a characteristic of a wind pollinated flower?  
 A. Has a strong scent.  
 B. Produces large amount of pollen grains.  
 C. Has dull petals.  
 D. Has feathery stigmas.

48. Which one of the following is an advantage of friction?  
 A. Helps in walking.  
 B. It helps to skid.  
 C. Makes surfaces wear out.  
 D. Makes work difficult.

49. The diagram below shows a set-up used by std. 5 pupils.



Which one of the following need **not** be the same in the above experiment?

- A. Size of cotton wool.  
 B. Size of funnels.  
 C. Amount of water added.  
 D. Size of soil particles.
50. All the following are sources of electricity **except**  
 A. torch cells.  
 B. bicycle dynamo.  
 C. dam.  
 D. geothermal generator.