

SUNSHINE SECONDARY SCHOOL MOCK 2019
HOMESCIENCE PAPER 2

A pattern of a girl's blouse is provided. You are advised to study the sketches, instructions and the layout carefully before you begin the test.

Materials provided

1. Pattern pieces
 - A - Blouse front
 - B - Blouse back
 - C - Collar
 - D - Pocket
 - E - Crossway strip
2. A plain light weight cotton fabric 65 cm by 75 cm.
3. Sewing thread to match the fabric.
4. One large envelope.
5. Embroidery thread 30cm long.

THE TEST

Using the materials provided, cut out and make up the right half of the girl's blouse to show the following processes:-

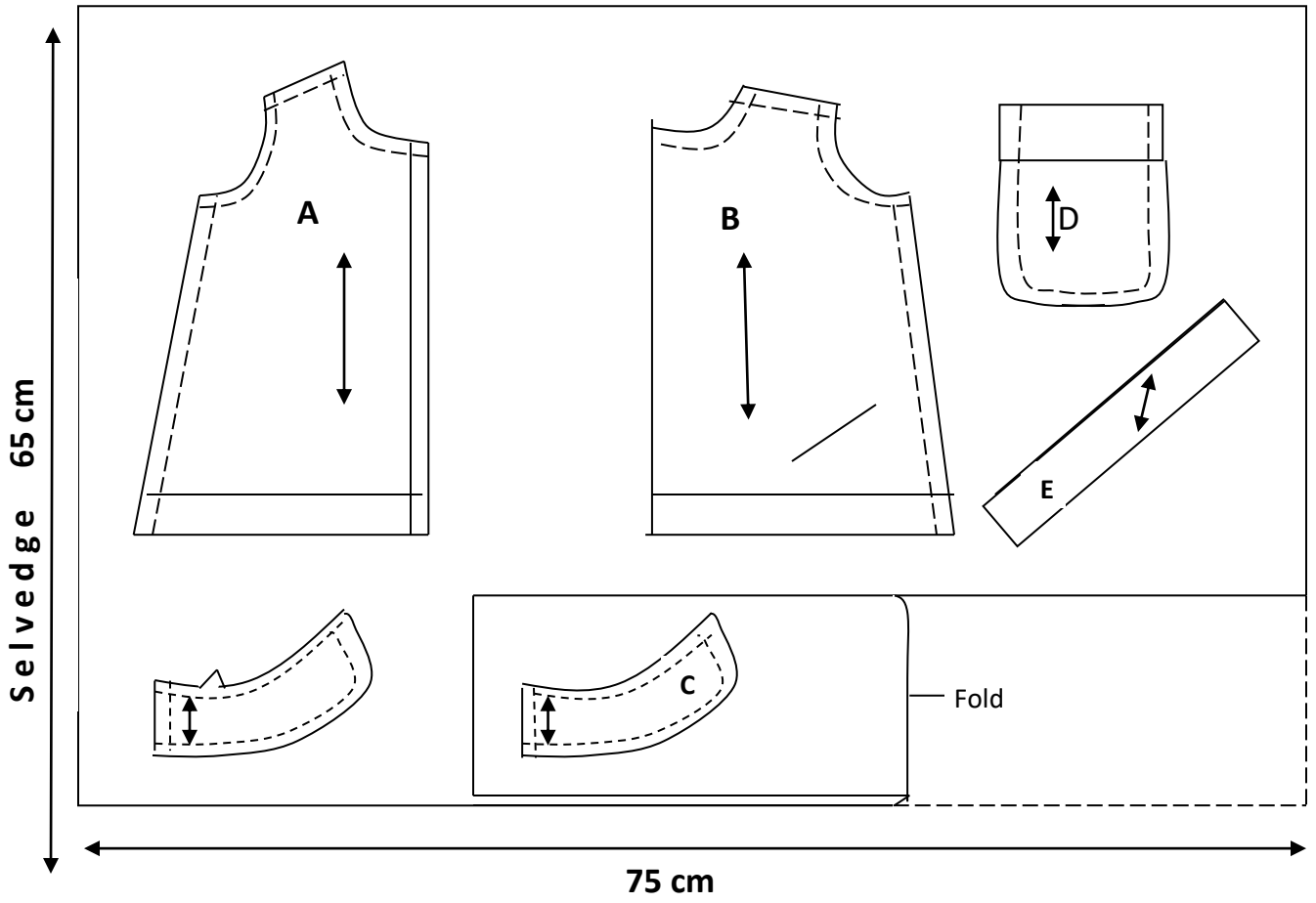
1. The making of the single pointed dart on the front blouse. **(6 marks)**
2. Making the outline of letter N on the pocket using chain stitch. **(4 marks)**
3. Preparation and the attachment of the pocket. **(12 marks)**
4. The making of the shoulder seam using an open seam. **(7 marks)**
5. The making of the side seam using French seam. **(7 marks)**
6. The preparation of the interfaced collar. **(6 marks)**
7. Attaching the collar on the neckline by binding method using the crossway strip.
Finish the raw edge using even tacking stitches. **(6 marks)**
8. Make the cut at the blouse back and hold the tear with fishbone stitches. **(6 marks)**
9. The working of the button holes using hand worked button hole stitches. **(8 marks)**
10. Managing the lower edge of the blouse using hemming stitches. **(8 marks)**

NB:

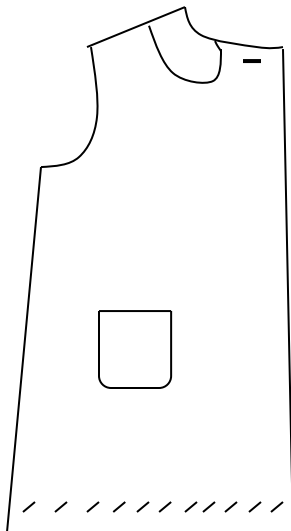
At the end of the examination, firmly sew on your work on single fabric a label bearing your name and index number. Remove the needles and pins from your work, then fold your work neatly and place it in the envelope.

DO NOT PUT SCRAPS OF FABRIC IN THE ENVELOPE AND DO NOT SEAL THE ENVELOPE.

LAYOUT- NOT DRAWN TO SCALE



**VIEW
FRONT VIEW**



BACK VIEW

