

KCSE TRIAL 2020

HOMESCIENCE PAPER 2

INSTRUCTIONS

A pattern of a child's dress is provided. You are advised to study the sketches, the question paper and the layout before you begin the test.

MATERIALS PROVIDED

1. Pattern pieces.
 - A - Blouse front
 - B - Blouse back
 - C - Pocket Front shirt facing
 - D - Collar
 - E - Sleeve

NB. Interfacing for the collar should be cut from same fabric using the collar pattern.

2. Light weight plain cotton fabric **45cm** long by **90cm** wide.
3. Sewing thread to match the fabric.
4. elastic **12cm** long and **1cm** wide.
5. One large envelop and bodkin needle/safety pins.

THE TEST

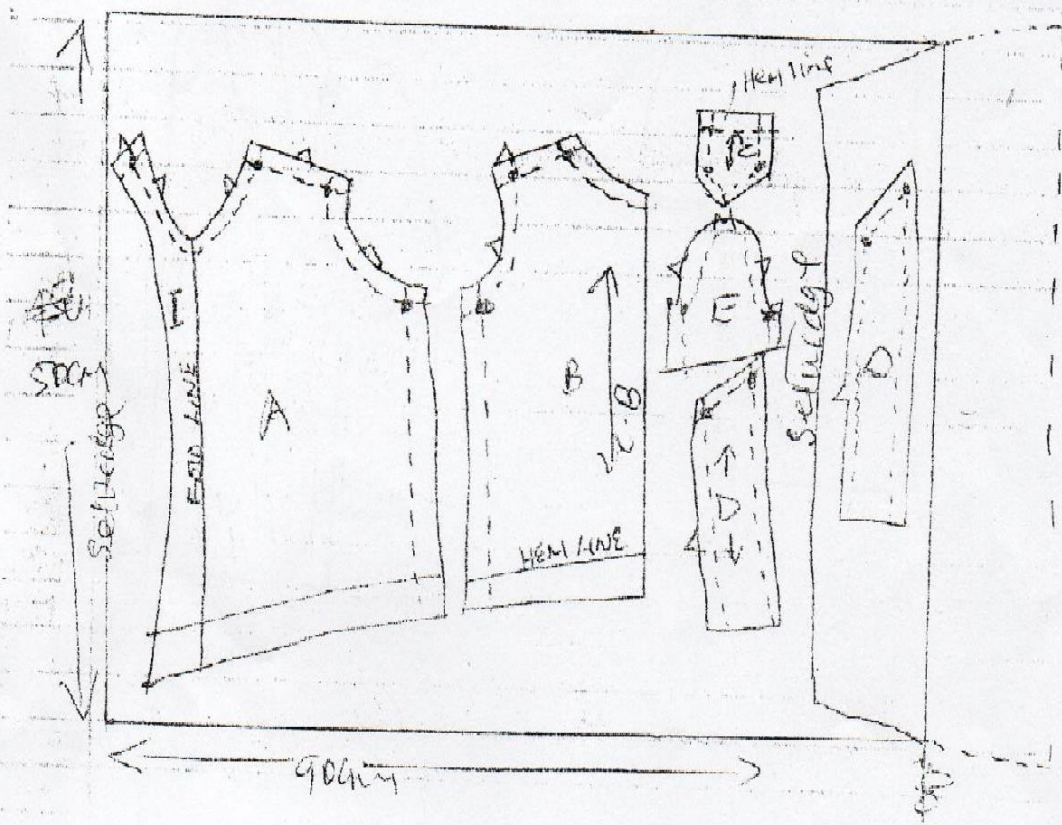
Using the materials provided, cut out and make up the left half of the blouse/bodiece to show the following;

- a) Making of a double stitched seam at the shoulder, on the RS
- b) Making of the side seam using an open seam.
- c). Neatening of the facing.
- d). Preparation of an interfaced collar.
- e). Preparation and attachment of the collar by sandwiching it between the facings.
- f). Preparation and attachment of the patch pocket.
- g). Management of the hem using slip hemming stiches (**blouse front only**)
- h). Making of a button hole by hand.
- i). Making a casing at the hem of the sleeve leaving an insertion gap of 1.5cm a centimeter away from the sleeve seam.
- j). The working of gathers at the crown of the sleeve.
- k). The attaching of the sleeve.
- l). The insertion of elastic without closing the insertion gap.
- m). Cutting of a straight tear and repairing using fishbone stitch.

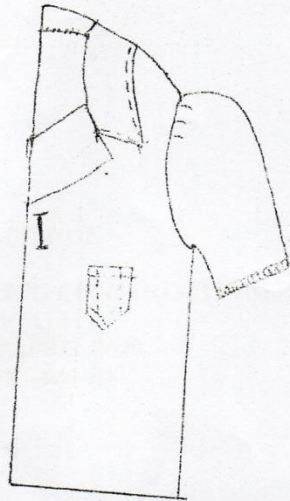
NOTE:

- At the end of the examination, firmly sew on your work a single fabric, a label bearing your name and index number.
- Remove the needles and pins from your work then fold your work neatly and place it in the envelop provided
- Do not put scraps of fabric with your work.

THE LAYOUT [Not drawn to scale]



FRONT VIEW



BACK VIEW

