

KCSE PREDICTION 2018

HOME-SCIENCE PAPER 2 QUESTIONS

1. A pattern of a girl's skirt is provided. You are advised to study the sketches, the question paper and the layout carefully before you begin the test.

MATERIALS PROVIDED

1. Pattern pieces

A Skirt front

B Skirt back

C Pocket

D Front yoke

E Skirt full

2. Light weight cotton fabric 60cm by 90cm wide.

3. Sewing thread to match the fabric. 4. One large envelope.

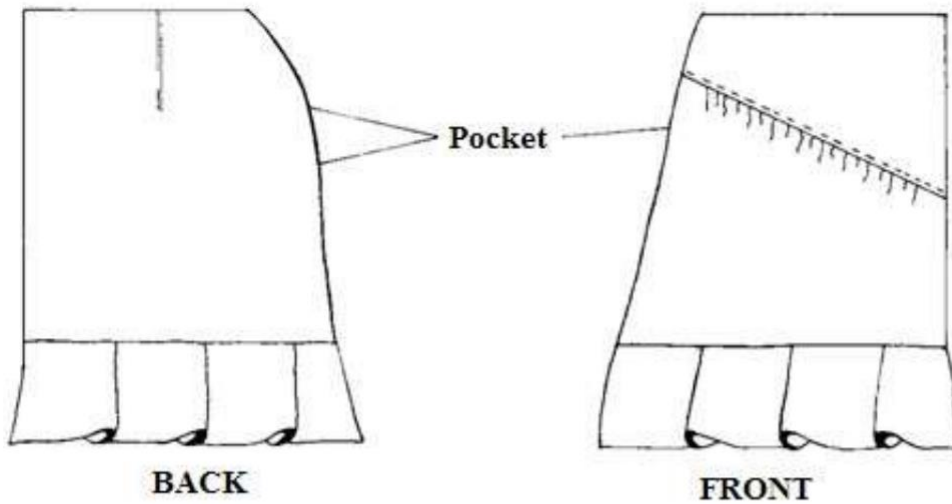
THE TEST

Using the materials provided, cut out and make up the right half of the skirt to show the following processes:

- a) Making of the back dart.
- b) The preparation of the gathers on the skirt front piece.
- c) Attachment of the yoke piece to the skirt front piece using a neatened overlaid seam.
- d) Attachment of front pocket piece to the skirt front and back pocket to the skirt back.
- e) The making of an open seam at the side above and below the pocket mouth.
- f) The joining of the pocket bag seam. Do not neaten nor trim.
- g) The joining of the frill pieces using French seam.
- h) Preparation of the frill hem and slip hemming a quarter of the frill on the front.
- i) The preparation of the knife pleats on the frill.
- j) Attachment of the frill to the skirt using a plain seam. Do not trim nor neaten.

At the end of the examination, firmly sew onto your work, on a single fabric, a label bearing your name and index number. Remove the needle and pins from your work, then fold your work carefully and place it in the envelope provided. Do not put scraps of fabric in the envelope.

SKIRT VIEW



THE LAYOUT (NOT DRAWN TO SCALE)

