

# KCSE PREDICTION 2018

## AGRICULTURE PAPER 1 QUESTIONS

### SECTION A (30 Marks)

Answer all questions in this section in the spaces provided.

1. State four maintenance practices for a knapsack sprayer. (2 marks) .....  
.....  
.....  
.....
2. State four factors that are considered when formulating a livestock ration. (2 marks) .....  
.....  
.....  
.....
3. List three causes of infertility in a dairy goat. (1½ marks)  
.....  
.....  
.....
4. Give two problems associated with the tractor hire services that farmers encounter. (1 mark) .....  
.....  
.....
5. List four routes through which pathogens can enter the body of an animal. (2 marks) .....  
.....  
.....  
.....
6. Give two products of microbial digestion in the rumen of an animal. (1 mark) .....  
.....  
.....
7. Name four tools that are used when laying concrete blocks during construction of a wall. (2 marks)  
.....  
.....  
.....  
.....
8. State four conditions that can make a cow to withhold milk during milking. (2 marks) .....  
.....  
.....  
.....
9. Give two reasons for raddling in sheep management. (1 mark) .....  
.....  
.....
10. Name the tools used during the following livestock management practices. (1 ½ marks)
  - i. Hoof trimming  
.....
  - ii. Dusting  
.....

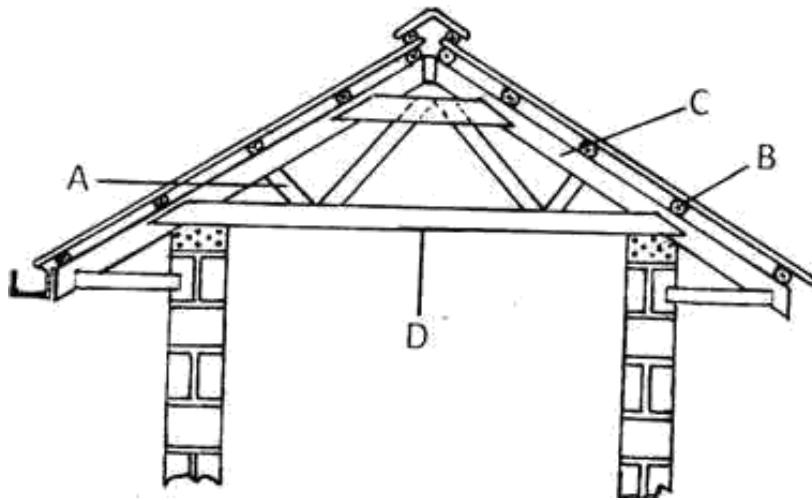
.....  
iii. Deworming using solid drugs  
.....

11. . A dairy cow under zero- grazing system weighs 700 kg. Calculate how much of dry matter it takes given that it requires 2.5 kg for every 100kg live weight. (2 marks)  
.....
12. Name a livestock disease with the following characteristics: chewing wood, bones and rocks.(1 mark)  
.....  
.....
13. State four advantages of using animal power in the farm. (2 marks) .....  
.....  
.....  
.....
14. . Distinguish the functional difference between a cross-cut saw and a rip-saw. (1 mark) .....  
.....
15. Give four disadvantages associated with air-cooled tractor engines. (2 marks) .....  
.....  
.....  
.....
16. . Give the meaning of the following terms as used in livestock diseases. (2 marks) i. Incubation period.  
.....  
.....
- ii. Infectious disease  
.....  
.....
17. . List four management practices carried out in a fish pond for optimum fish production. (2 marks) .  
.....  
.....  
.....  
.....
18. . Name four parts of the power transmission system of a tractor. (2 marks) .....  
.....  
.....  
.....

**SECTION B (20 Marks)**

**Answer ALL the questions in this section in the spaces provided**

19. The diagram below represents roof of a building.



i. Identify the parts labeled A, B, and C. (1½marks)

A .....

B .....

C .....

ii. Give four factors considered when siting farm buildings and structure. (2 marks)

.....

.....

.....

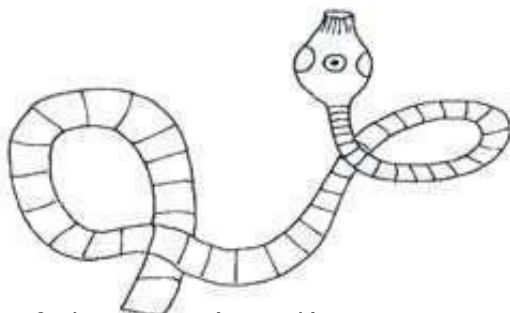
iii. Explain three factors which would be considered in choosing materials for construction of farm buildings and structures. (1 ½ marks)

.....

.....

.....

20. The diagram below shows a livestock parasite.



a) Identify the parasite. (½ mark)

.....

b) In which organ in livestock is the parasite found. (½ mark)

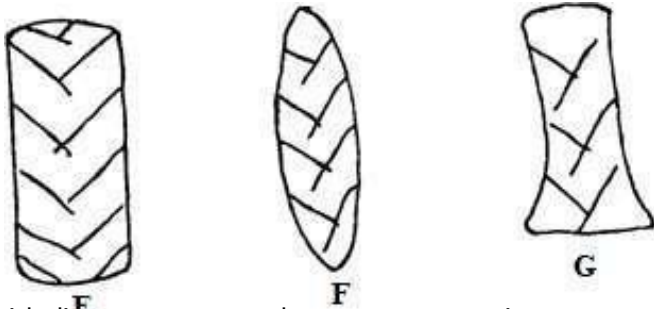
.....

c) Name one intermediate host of the parasite. (½ mark)

.....  
d) Outline three symptoms of attack in livestock by the above parasite. (3 marks)

.....  
e) State three methods by which the parasite can be controlled. (1½ marks)

.....  
21. The diagram below represents conditions of a tractor tyre.

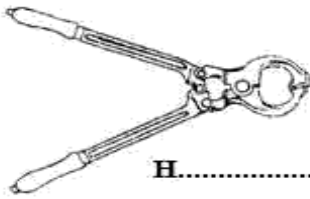


i. Which diagram represents the correct pressure in a tractor tyre? (½ mark)

.....  
ii. Identify the mistakes with the other two tyres. (2 marks)

.....  
iii. Give the correct measures taken for each tyre mentioned in (b) above. (2 marks)

.....  
22. The illustrations below represents farm tools. Study them and answer questions that follow.



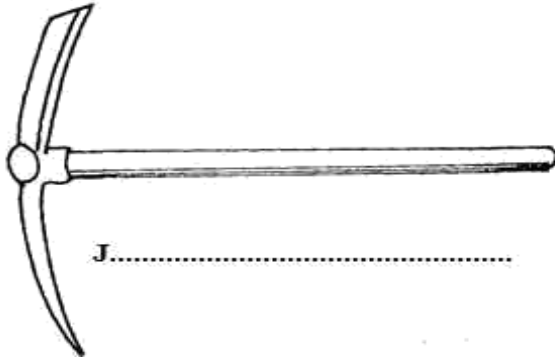
H.....



K.....



L.....



J.....



M.....

i. Identify the tools labeled H, K, L, and J (2marks)

H.....  
K.....  
L.....  
J.....

ii. Give one functional advantage of tool K and L. (1mark)

.....  
.....

iii. State three maintenance practices carried out on tool M. (1½ marks)

.....  
.....  
.....

### SECTION C (40 Marks)

Answer any two questions from this section in the spaces provided after question 25.

23. (a) Describe Coccidiosis under the following sub-headings.

i. Causal organism (1 mark)

ii. Signs of attack/infection. (5 marks)

iii. Control measures (4 marks)

(b) Give five advantages of a two-stroke engine over a four stroke engine cycle. (5 marks)

(c) Discuss the essentials of clean milk production in a herd. (5 marks)

24. (a) Describe the rearing of lambs from lambing up to weaning time. (10 marks)



