

# GRADE 3 TERM 3 EXAM, 2020

## SCIENCE

SCHOOL: \_\_\_\_\_ DATE: \_\_\_\_\_

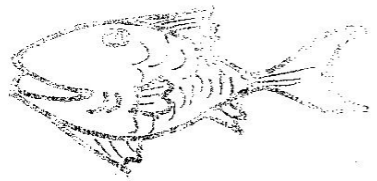
A place where plants grow naturally is called its \_\_\_\_\_.  
**(nursery, home, habitat)**  
 This balloon is filled with \_\_\_\_\_.



**(air, nothing, water)**  
 We need \_\_\_\_\_ in order to keep our body healthy.  
**(exercise, pray, read)**  
 The weather today is \_\_\_\_\_.



**(rainy, windy, calm)**  
 A spider has \_\_\_\_\_ legs.  
**(6, 8, 10)**  
 We model using \_\_\_\_\_ soil.  
**(loam, sand, clay)**  
 This animal breathes using \_\_\_\_\_.

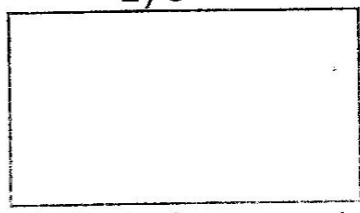


**(gills, lungs)**  
 Boiling water makes \_\_\_\_\_ to appear.  
**(air bubbles, water bubbles, soil bubbles)**  
 A person has \_\_\_\_\_ senses.  
**(4, 2, 5)**  
 We clean our noses with a \_\_\_\_\_.  
**(cotton pad, handkerchief, gloves)**  
 Beak is a mouth of a \_\_\_\_\_.  
**(cow, cat, bird)**

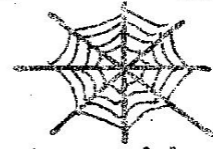
12. On a rainy day people wear \_\_\_\_\_.  
**(slippers, umbrella, gumboots)**  
 13. This is a \_\_\_\_\_ seed.



**(maize, bean, rice)**  
 14. Moving air is called \_\_\_\_\_.  
**(cloud, sun, wind)**  
 15. A long period without rain is called \_\_\_\_\_.  
**(weather, climate, drought)**  
**Draw this picture**

16. Eye  


17. Malaria is spread by an insect known as \_\_\_\_\_.  
**(housefly, spider, mosquito)**  
 18. The diagram below shows the habitat of a \_\_\_\_\_.



**(snake, spider, ant)**  
 19. Farmers prepare their land for planting during \_\_\_\_\_ season.  
**(dry, rainy)**  
 20. Dirty toes are the home of \_\_\_\_\_.  
**(jiggers, snails, lice)**  
 21. A young plant is called \_\_\_\_\_.  
**(seed, weeds, seedling)**  
 22. We eat the \_\_\_\_\_ of a cabbage.  
**(root, leaf, stem)**

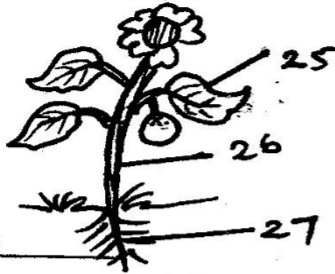
23. \_\_\_\_\_ makes sick people get well.

(Medicine, Exercise, Germs)

24. The sense organ for tasting is

(tongue, skin, mouth)

Name the parts of a plant



25. \_\_\_\_\_

26. \_\_\_\_\_

27. \_\_\_\_\_

28. Animals kept at home called \_\_\_\_\_ animals.

(domestic, dogs, wild)

29. Diseases are caused by \_\_\_\_\_.

(food, water, germs)

30. This is a leaf of \_\_\_\_\_ plant.



(maize, bean, groundnut)

31. \_\_\_\_\_ are unwanted plants.

(Weed, Maize, Seedling)

32. People who cannot speak pass their messages using

(mobile phones, songs, gestures)

Name the parts of a fly



33. \_\_\_\_\_

34. \_\_\_\_\_

35. \_\_\_\_\_

36. \_\_\_\_\_

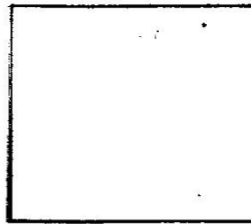
37. \_\_\_\_\_

38. A place where it is very hot and nothing grows is called \_\_\_\_\_.

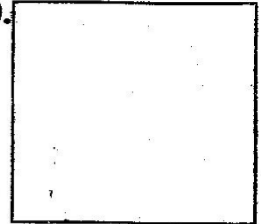
(floods, desert, flat)

Draw two fruits and name

39.



40.



41. The main source of heat is the

(fire, sun, candle)

42.



The weather symbol below shows the day was \_\_\_\_\_.

(windy, calm)

43. Food, shelter and \_\_\_\_\_ are the basic human needs.

(water, clothing, housing)

44. The sense of \_\_\_\_\_ helps us to tell the size of objects.

(sight, hearing, taste)

45. Bees and wasps protect themselves by \_\_\_\_\_.

(stinging, walking, biting)

46. Which one of the following wheels are best for making a toy car?



47. When having meals we should always behave well. This is called good \_\_\_\_\_.

(good people, people manners, table manners)

48. Clothes are made from \_\_\_\_\_.

(cotton, trees, sisal)

49. We wear \_\_\_\_\_ clothes when the weather is cold.

(light, new, heavy)

50. It is used for climbing high places. It is called a \_\_\_\_\_.

(hammer, fishing rod, ladder)