

10. Which pair of plants below have the same type of root?

- A. Onions and carrot
- B. Maize and peas.
- C. Peas and beans.
- D. Kales and rice

11. Medicines that are used to treat known diseases are called:

- A. vaccines
- B. supplementary medicines
- C. pain relievers.
- D. curative medicines

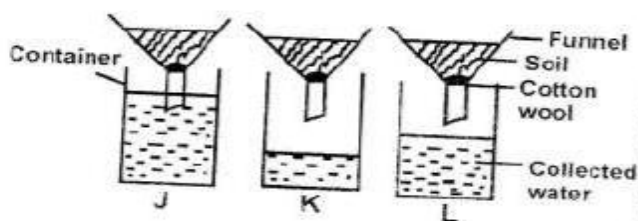
12. Which weather instrument below is **mainly** used to show the direction of wind?

- A. Windvanes
- B. Air thermometer
- C. Rain gauge
- D. Liquid thermometer

13. Which one of the following is **not** a characteristic of a whale?

- A. Body covered with fur.
- B. Lays fertilised eggs.
- C. Breathes through lungs.
- D. Has a constant body temperature.

14. The set up drawn below was used to investigate a certain property of soil



Which letter represents the soil that is sand soil?

- A. J
- B. K.
- C. L
- D. None.

15. The following are conditions necessary for seed germination except

- A. Soil
- B. Light
- C. Warmth
- D. Moisture

16. Which one of the following is **not** an effect of HIV/AIDS infection on the nation?

- A. Loss of well - trained people.
- B. General feeling of shock.
- C. High number of school dropouts
- D. Congestion in hospital

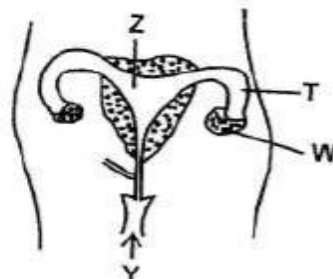
17. Which part of the female reproductive system gives room for fertilisation?

- A. Oviduct
- B. Uterus
- C. Vagina
- D. Ovary

18. The following nutrients help in the formation of strong bones and teeth **except**:

- A. Phosphorous
- B. Calcium
- C. Vitamin D
- D. Iron

19. From the diagram below the name of the part marked Z is



- A. ovary
- B. womb
- C. vagina
- D. oviduct

20. Exchange of air in the breathing system takes place in the

- A. air sacs
- B. diaphragm
- C. nose
- D. trachea

21. Which one of the following is **not** a reason why we should go for HIV testing?

- A. To know our status.
- B. To overcome fear.
- C. To spread the virus.
- D. To campaign against HIV/AIDS

22. The following are all characteristics of wind pollinated flowers. Which one is **not**?

- A. They produce many light pollen grain.
- B. They are usually dull in colour.
- C. They have hairy stigma
- D. They are large in size.

23. Standard six pupils from a certain school were told to collect the following materials

(i) Wire

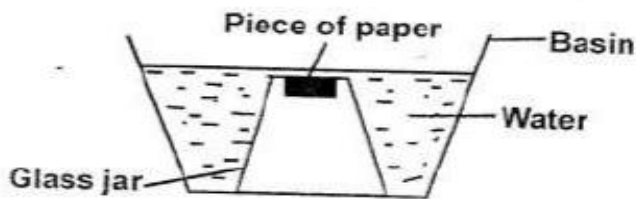
(ii) Strong polythene paper

(iii) Strong string

(iv) Strong pole

The weather instrument they were to construct is

- A. Liquid thermometer. B. Windsock
C. Windvane D. raingauge
24. Which of the following animals is a reptile?
A. Chameleon B. Frog
C. Newt D. Salamander
25. Which one of the following is **not** a poor conductor heat?
A. Nail B. Wood
C. Glass D. Bone
26. Standard five pupils from Nalondo primary school carried out the experiment shown below



From the above set up, the pupils concluded that,

- A. liquids occupy space
B. air has definite mass
C. gases occupy space
D. liquids take the shape of the container.
27. Digestion of food ends in the
A. large intestine B. stomach
C. anus D. small intestine
28. Which one of the following is **not** a characteristic of clay soil?
A. It retains least amount of water.
B. It has the smallest particles.
C. It has the highest capillarity.
D. It is used in modelling.
29. The loudness or softness of sound is called
A. noise B. volume
C. sound quality D. pitch

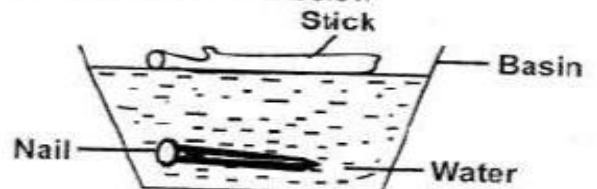
30. Which material is **not** needed when comparing capillarity in soil?
A. Water
B. Biro pen casing
C. Pieces of cloth
D. Collecting jars.

31. Which one of the following is **not** a physical change in adolescent girls?
A. Widening of the shoulders.
B. Menstrual flow begins.
C. Hair grows under the armpit
D. They start producing mature sex cells

32. Pollen grains are produced on the
A. stigma B. anthers
C. ovary D. petals

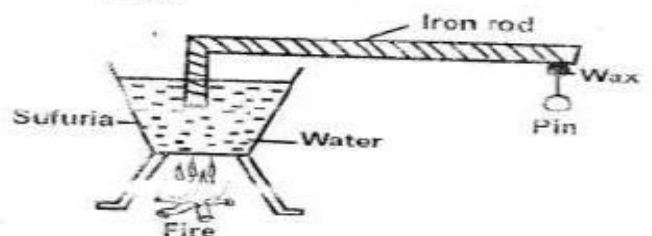
33. Which one is a product obtained from a sheep?
A. Dairy B. Eggs
C. Mohair D. Mutton

34. Moraa placed a very big stick and a nail on water as shown below



She concluded that:

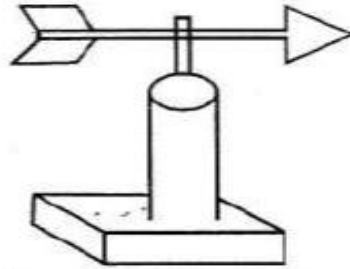
- A. mass affect sinking and floating
B. size affects sinking and floating
C. type of material affect floating and sinking
D. shape does not affect floating and sinking
35. The experiment below was done by class five pupils



heat reached the wax through which method of heat transfer?

36. Which one of the following is **not** a characteristic of liquids?
 A. They expand when heated.
 B. They have indefinite shape
 C. they have definite mass
 D. They condense when cooled
37. The quantity of matter in an object is called
 A. solid
 B. mass
 C. volume
 D. weight
38. Which one of the following is **not** a part of female reproductive systems?
 A. Urethra
 B. Uterus
 C. Oviduct
 D. Cervix
39. Which of the following types of teeth is the last to be shed?
 A. Premolars
 B. Canines
 C. Incisors
 D. Molars
40. Which soil has the best capillarity?
 A. Sand
 B. Loam
 C. Clay
 D. Both sand and loam
41. Which one is **not** an invertebrate?
 A. Grasshopper
 B. Tick
 C. Housefly
 D. Lizard
42. The **best** requirement for good health for a sick person is
 A. rest
 B. medical care
 C. exercise
 D. sleep
43. Which plant below cannot make its own food through photosynthesis?
 A. Fern
 B. Sisal
 C. Mould
 D. Moss
44. Which component of soil is made up of dead decayed matter?
 A. Mineral particles.
 B. Living organisms.
 C. Water
 D. Humus

45. The arrow of the weather instrument drawn below was seen pointing South



- From which direction was the wind blowing?
 A. East
 B. West
 C. South
 D. North
46. Which of the following can be controlled by draining stagnant water around our homes?
 A. Malaria
 B. Tuberculosis
 C. Rickets
 D. Marasmus
47. Which one of the following is **not** a fibre crop?
 A. Sisal
 B. Sunflower
 C. Palm tree
 D. Cotton
48. The following are all characteristics of nimbus clouds **except**
 A. they are dark grey in colour.
 B. they appear low in the sky.
 C. their presence is a sign of heavy rain.
 D. they look like bundles of cotton wool
49. Which pair of types of teeth are you **not** likely to use when eating groundnuts?
 A. Molars and incisors
 B. Canines and premolars
 C. Incisors and canines
 D. Premolars and molars
50. The following are proper ways of storing medicine **except**
 A. using medicines for their recommended purpose.
 B. keeping medicines away from direct sunlight.
 C. storing medicines in lockable cupboards.
 D. not storing medicines in soda bottles.